



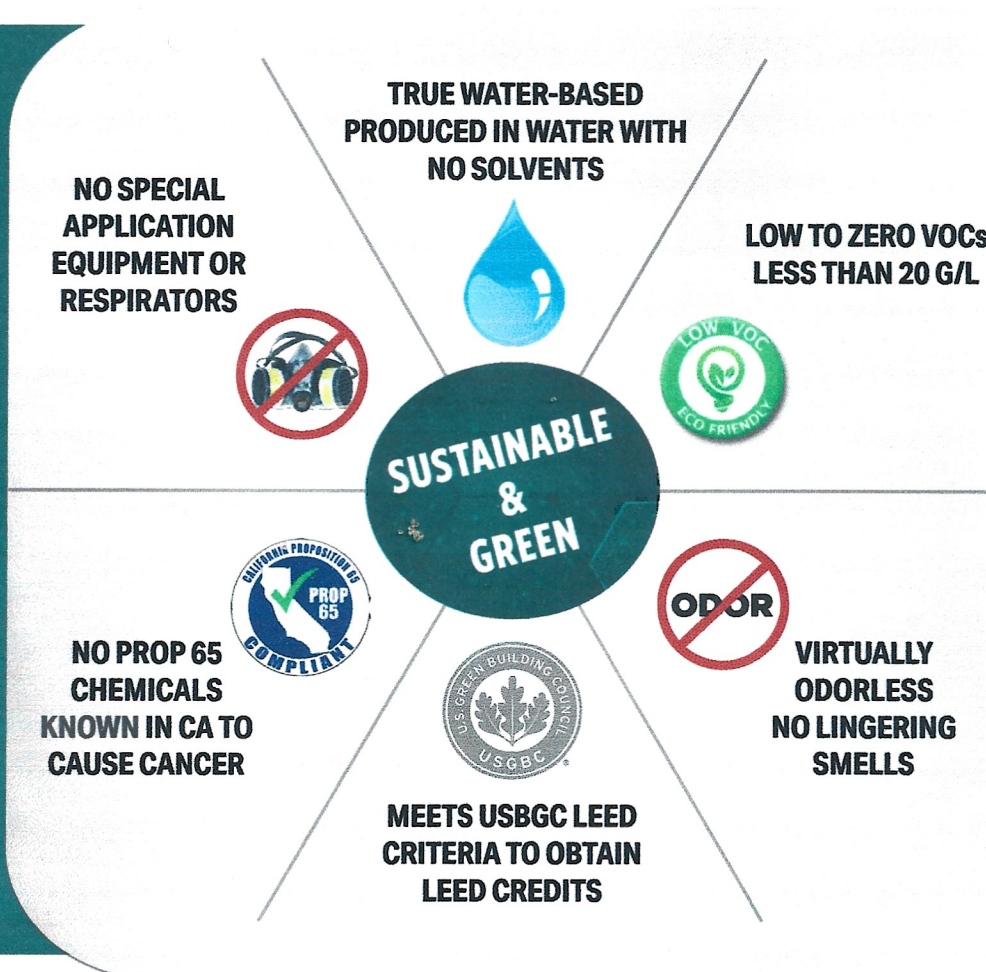
# SUPREME XTREME

## HIGH PERFORMANCE INDUSTRIAL COATING





**A REVOLUTIONARY TECHNOLOGY THAT USES A PROPRIETARY RESIN THAT REPLACES THE SOLVENT WITH WATER IN A POLYURETHANE. THIS CUSTOM RESIN CAN BLEND TOGETHER HIGH PERFORMANCE MATERIALS & ADDITIVES THAT TYPICALLY REACT WITH WATER. THE RESULTS ARE THE SUPREME XTREME COATINGS, TRUE WATER-BASED, ALIPHATIC POLYESTER POLYURETHANES WITH EXCEPTIONAL PERFORMANCE CHARACTERISTICS.**



**IDEAL FOR...**



# SUPREME XTREME

# KEY PRODUCT FEATURES

## ADHESION

PERFECT ADHESION TO ALL TYPES OF SUBSTRATES WITHOUT A PRIMER - 2,600+ PSI

## ABRASION RESISTANCE

EXCELLENT DURABILITY & WEAR WITH < 20 MG LOSS ON 1,000 CYCLES WITH C17 WHEEL

## HARDNESS

EXTREMELY HARD PRODUCT WITH A 3H+ PENCIL HARDNESS

## IMPACT RESISTANCE

160 IN-LBS. FOR BOTH DIRECT & INDIRECT SIDES - HIGHEST RESULT POSSIBLE

## FLEXIBILITY

VERY FLEXIBLE - APPLIED TO VINYL, RUBBER & WALLPAPER > 32% ELONGATION

## CHEMICAL RESISTANCE

RESISTANT TO ALL TYPES OF CHEMICALS, KETCHUP, ALCOHOL, ACIDS, BLEACH & MORE...

## BREATHABLE

WATER BARRIER THAT ALLOWS WATER VAPORS TO MIGRATE THROUGH COATING

## UV / CORROSION

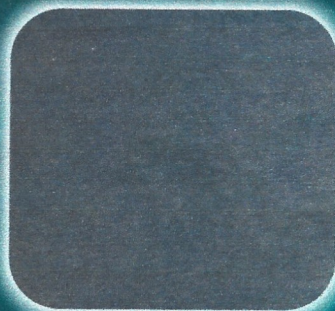
MINIMAL GLOSS LOSS & COLOR FADE - MEETS SSPC PAINT 36 STANDARDS

## EASY TO MAINTAIN

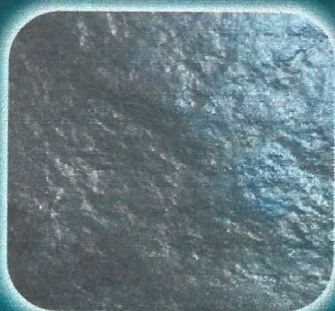
DIRT, DEBRIS, MILDEW AND SOAP SCUM SIT ON TOP OF COATING AND ARE EASILY REMOVED

## FINISH OPTIONS

- ✓ CLEAR COATS
- ✓ TINT BASES
- ✓ ANY COLOR



MATTE ~15°



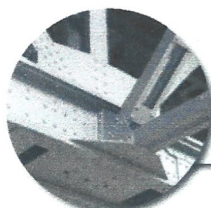
SATIN ~50°



HIGH GLOSS > 85°



CONCRETE



STEEL & METAL



WOOD



FIBERGLASS



PREVIOUSLY PAINTED



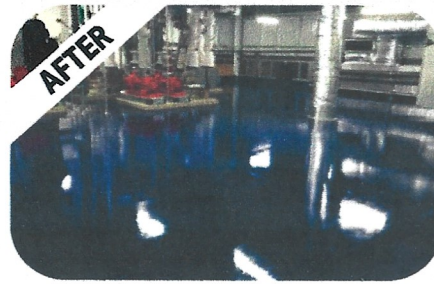
EIFS / FOAM

# SUPREME XTREME

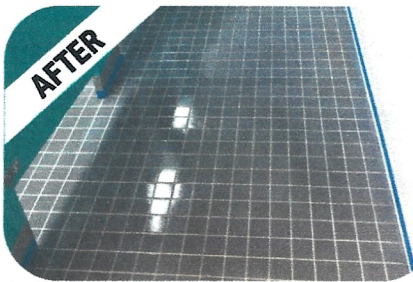
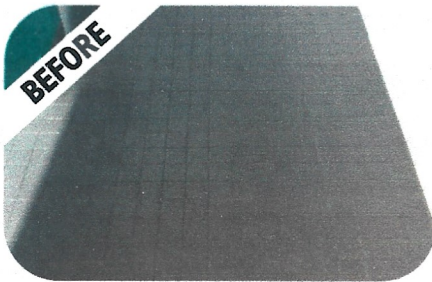
## REPLACED THE SOLVENT WITH WATER WITHOUT SACRIFICING PERFORMANCE



INTERIOR & EXTERIOR  
VERTICAL & HORIZONTAL  
ROLL, BRUSH OR SPRAY



INCREASES SLIP  
RESISTANCE  
VERY REPAIRABLE  
ANTI-GRAFFITI



### SIGNIFICANT COST SAVING

- ✓ SINGLE COAT VS 3+ COAT SYSTEMS
- ✓ NO PRIMERS - DIRECT TO SUBSTRATES
- ✓ LONGER LASTING - LESS RECOATS

## MARKETS WE SERVE

EDUCATION  
 AUTO DEALERSHIPS  
 RESIDENTIAL  
 MECHANICAL ROOMS  
 GARAGES

HEALTHCARE  
 FOOD & BEVERAGE  
 HOSPITALITY  
 WAREHOUSES  
 STUDIOS

AIRPORTS  
 MANUFACTURING  
 MARINE INDUSTRY  
 TRANSPORTATION  
 KITCHENS

THEME PARKS  
 RESTAURANTS  
 PHARMACEUTICAL  
 RESTROOMS  
 RETAIL



JFB Hart Coatings

[jfb supremextreme.com](http://jfb supremextreme.com)

Jim Beedie | 630-643-0143 | [jimbeedie@aol.com](mailto:jimbeedie@aol.com)

Aidan Thompson | 630-392-4977 | [aidan.thompsonjfb@outlook.com](mailto:aidan.thompsonjfb@outlook.com)